

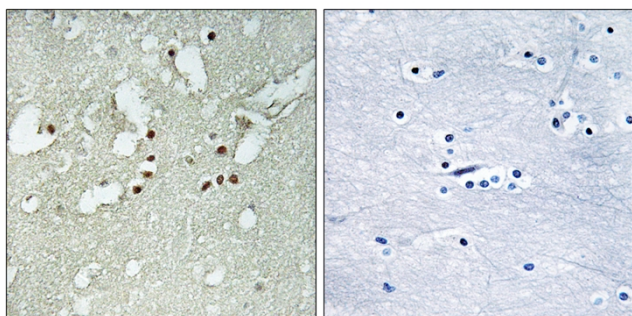


FoxJ3 Polyclonal Antibody

Catalog No	YP-Ab-01727
Isotype	IgG
Reactivity	Human;Mouse
Applications	IHC;IF;ELISA
Gene Name	FOXJ3
Protein Name	Forkhead box protein J3
Immunogen	The antiserum was produced against synthesized peptide derived from human FOXJ3. AA range:191-240
Specificity	FoxJ3 Polyclonal Antibody detects endogenous levels of FoxJ3 protein.
Formulation	Liquid in PBS containing 50% glycerol, 0.5% BSA and 0.02% sodium azide.
Source	Polyclonal, Rabbit,IgG
Purification	The antibody was affinity-purified from rabbit antiserum by affinity-chromatography using epitope-specific immunogen.
Dilution	IHC: 1/100 - 1/300. ELISA: 1/20000.. IF 1:50-200
Concentration	1 mg/ml
Purity	≥90%
Storage Stability	-20°C/1 year
Synonyms	FOXJ3; KIAA1041; Forkhead box protein J3
Observed Band	
Cell Pathway	Nucleus .
Tissue Specificity	Amygdala,Brain,Lung,
Function	similarity:Contains 1 fork-head DNA-binding domain.,
Background	similarity:Contains 1 fork-head DNA-binding domain.,
matters needing attention	Avoid repeated freezing and thawing!
Usage suggestions	This product can be used in immunological reaction related experiments. For more information, please consult technical personnel.



Products Images



Immunohistochemistry analysis of paraffin-embedded human brain tissue, using FOXJ3 Antibody. The picture on the right is blocked with the synthesized peptide.